

# CommunityCare

Good news! WeCare tlc has opened up access to comprehensive primary care in your community.



## What is CommunityCare?

End your search for the health services you and your family need! As a direct primary care membership program, CommunityCare offers members convenient, affordable access to advanced primary care.

## The benefits

- Affordable access to quality primary care, without the hassles of billing insurance plans
- Same-day or next-day appointments with direct access to a physician regardless of insurance, pre-existing conditions, age, or illness
- No co-pays and no deductibles: the fixed monthly fee covers 100% of primary care services
- Conveniently located health and wellness center with operating hours to suit your schedule
- Unlimited virtual access to health resources
- Continuity of care



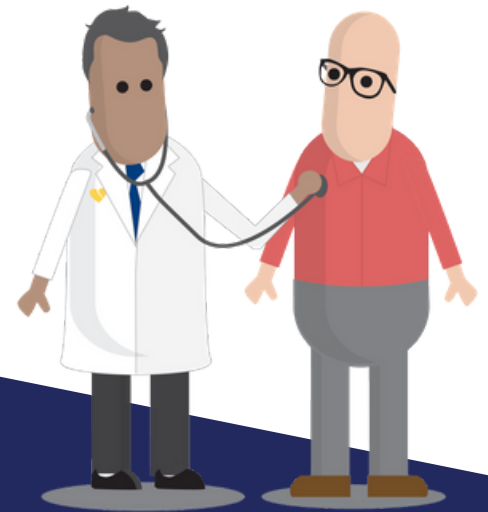
It's simple to get started!  
Learn more and register at  
[wecaretlc.com/community-care](http://wecaretlc.com/community-care)



# Direct primary care that puts your health first

As a **CommunityCare** member, you'll have access to:

- Acute Care & Episodic Services
- Chronic Disease Management
- Onsite Prescription Drug Dispensary
- Wellness/Prevention Services
- Health and Wellness Education & Counseling
- Integrated/Collaborative Care with Referral Management
- Virtual Visits & Online Patient Portal Access
- Non-emergent and Routine Tests & Labs
- Injections (with patient supplying medication)
- Select Pediatric Services.

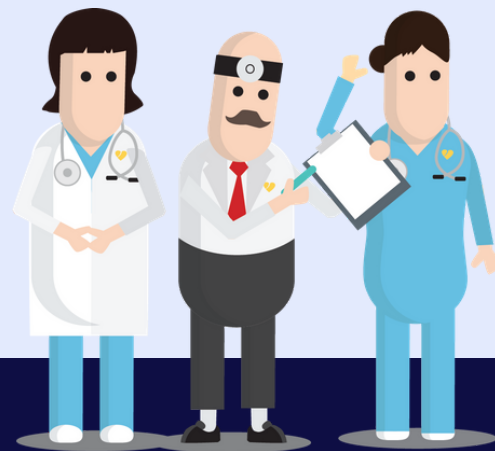


## How much does **CommunityCare** cost?

WeCare tlc's **CommunityCare** program provides affordable access to quality primary care for you and your family. Membership is based on a simple, fixed monthly fee. Fees may vary depending on your health & wellness center location.



As a leader in onsite and near-site advanced primary care healthcare centers for employers, WeCare tlc is on a mission to change how healthcare is delivered in the United States.



To learn more and to find a health & wellness center near you, please visit [wecaretlc.com/community-care](http://wecaretlc.com/community-care)